

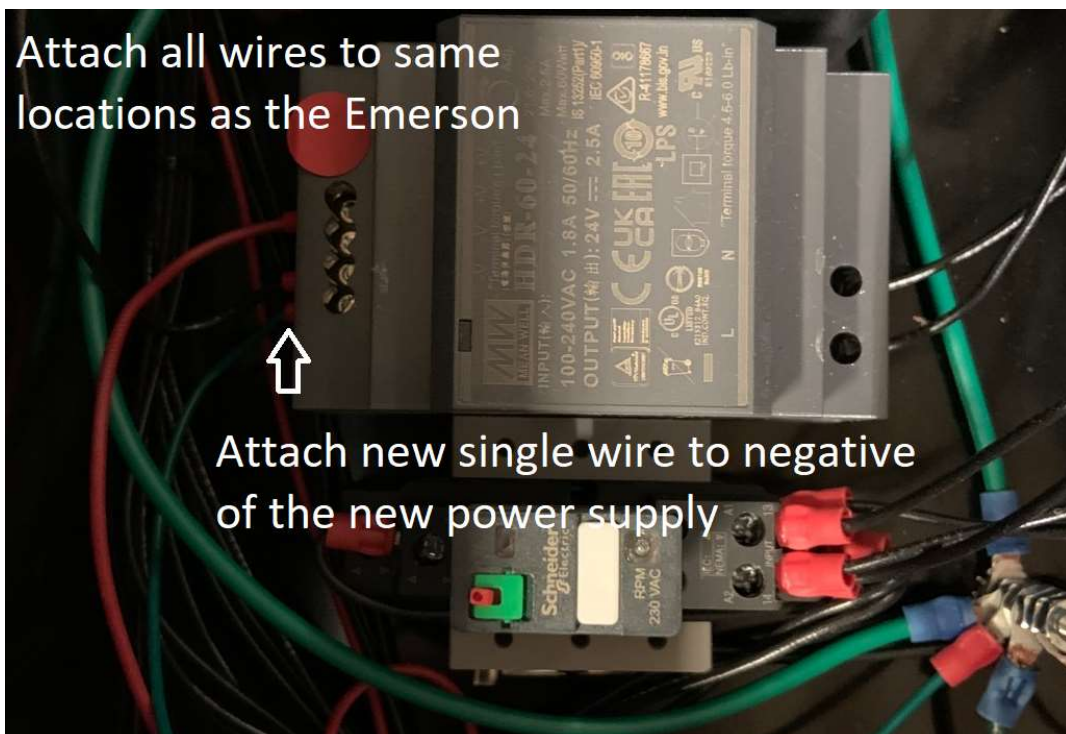
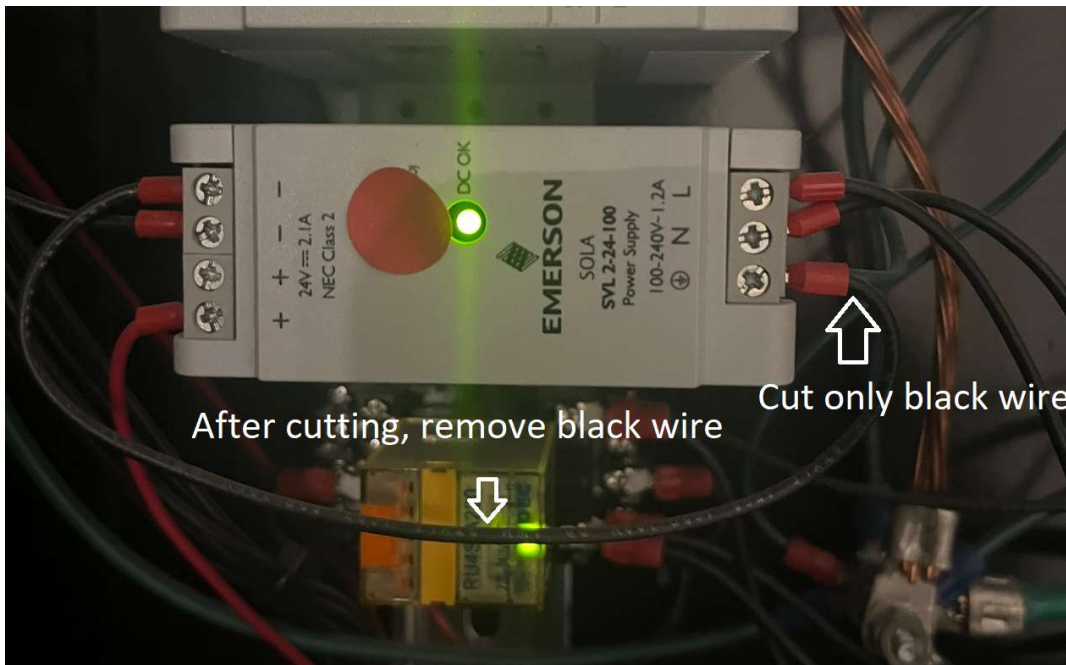
# CAMBRIDGE

E L E V  T I N G

181 Shearson Cres, Cambridge, Ontario, Canada N1T 1J3 • Toll Free: 1-800-265-3579 • Fax: (519) 653-9927

## Replacing 24Vdc Emerson with a 24Vdc Mean Well Power Supply

In 2022, CE started using a second option for the 24Vdc power supply, therefore you may have either unit installed. Here are some quick instructions on how to swap between an Emerson to Mean Well.



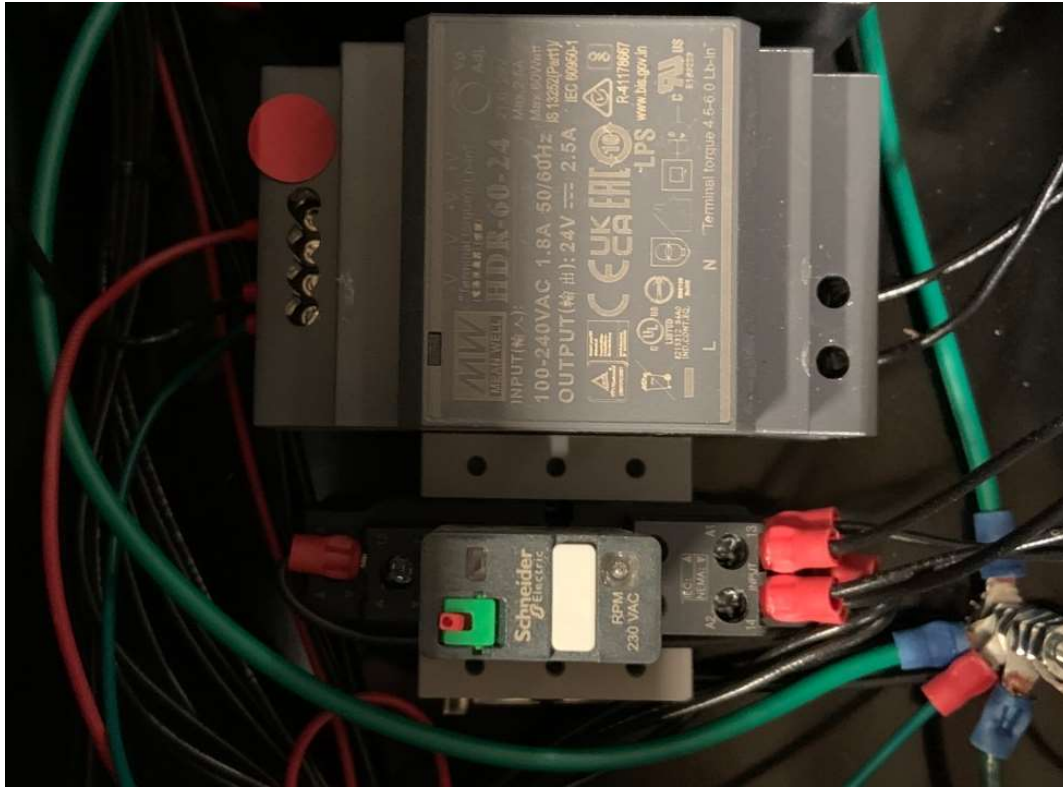
# CAMBRIDGE

E L E V  T I N G

181 Shearson Cres, Cambridge, Ontario, Canada N1T 1J3 • Toll Free: 1-800-265-3579 • Fax: (519) 653-9927

## Replacing 24Vdc Mean Well Power Supply

If you already have a Mean Well power supply just connect as shown.



Specifications:

Voltage Input: 240 VAC

Voltage Output: 28.9 VDC

Any questions please call Technical Support Team at 1 866-209-3421.